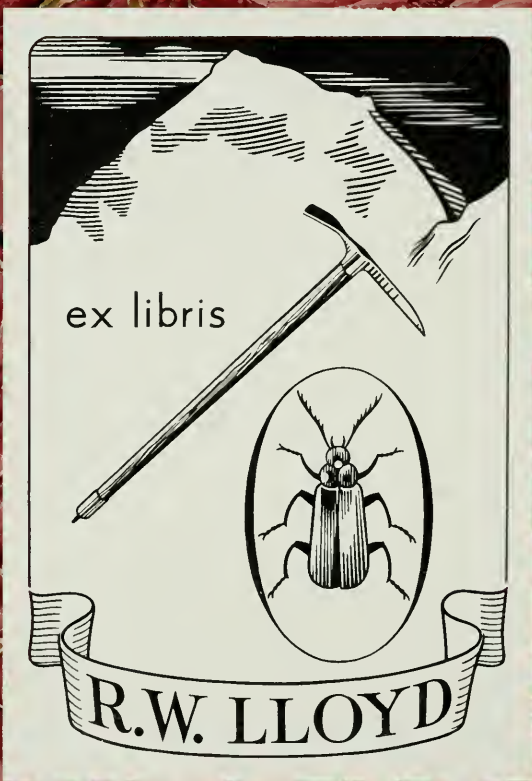
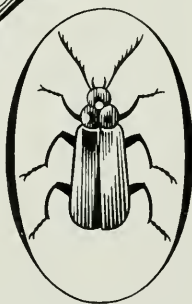


1/4/93  
to  
4/29/93

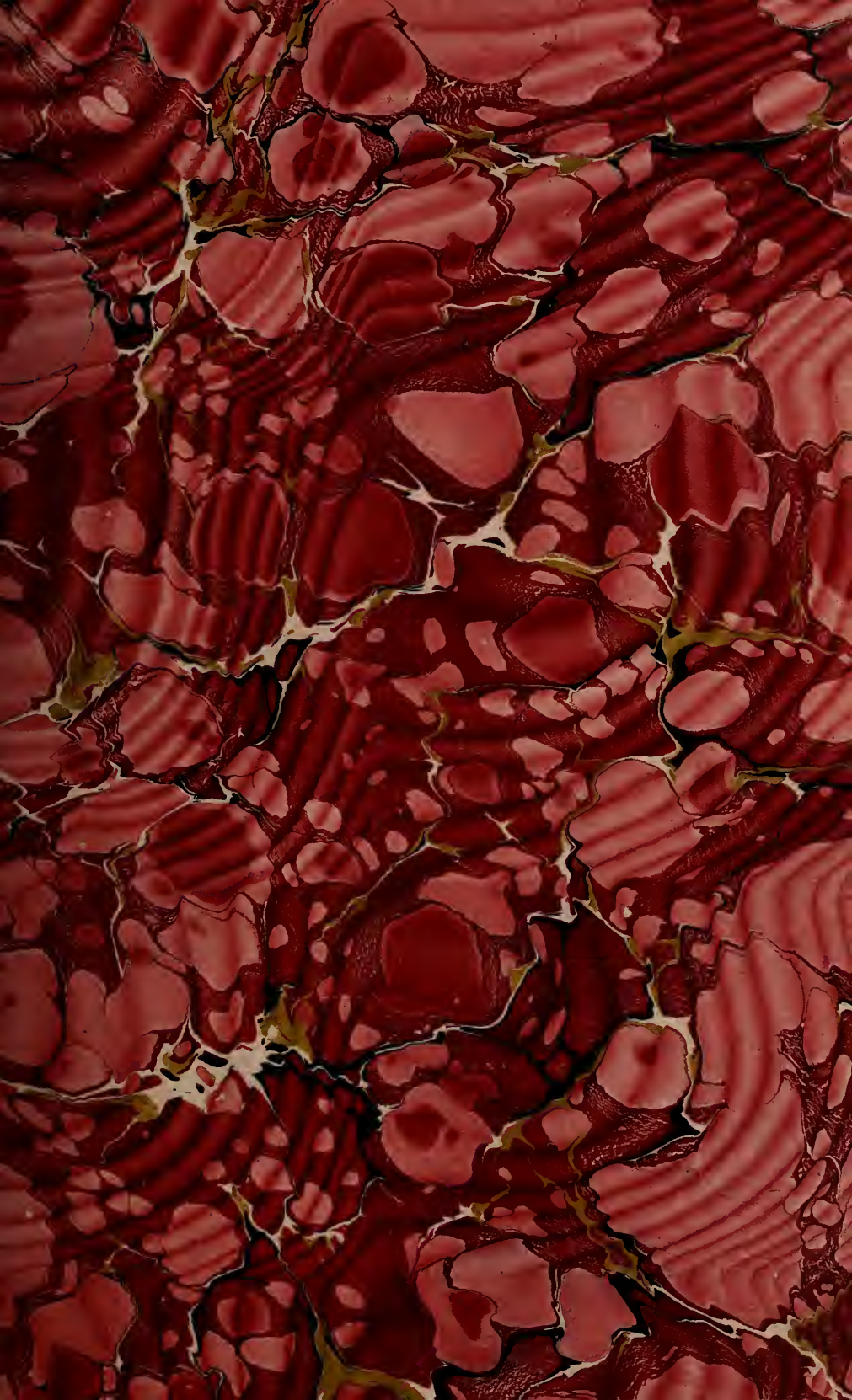


ex libris



R.W. LLOYD











CATALOGUE  
OF  
PICTURES,  
BOTH  
ANCIENT AND MODERN,  
FROM THE COLLECTIONS OF THE LATE  
EDMUND ROUND, ESQ.,

*(by order of the Court),*

W. W. BOULTON, ESQ., DECEASED,  
*Late of Old Swinford, Stourbridge,*

AND THE  
PROPERTY OF A GENTLEMAN, DECEASED,  
Including "Killiecrankie," by Turner, from the Novar Collection;

ALSO,

PICTURES BY OLD MASTERS,  
FROM VARIOUS PRIVATE SOURCES:

WHICH

Will be Sold by Auction by  
MESSRS. CHRISTIE, MANSON & WOODS.

AT THEIR GREAT ROOMS,

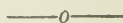
8 KING STREET, ST. JAMES'S SQUARE, *L15270*

On SATURDAY, JANUARY 14, 1893,

AT ONE O'CLOCK PRECISELY.

—♦—  
May be viewed Two Days preceding, and Catalogues had,  
at Messrs. CHRISTIE, MANSON and WOODS' Offices, 8 King Street,  
St. James's Square, S.W.

## CONDITIONS OF SALE.



- I. THE highest Bidder to be the Buyer; and if any dispute arise between two or more Bidders, the Lot so in dispute shall be immediately put up again and re-sold.
- II. No person to advance less than 1s.; above Five Pounds, 5s.; and so on in proportion.
- III. In the case of Lots upon which there is a reserve, the Auctioneer shall have the right to bid on behalf of the Seller.
- IV. The Purchasers to give in their Names and Places of Abode, and to pay down 5s. in the Pound, or more, in part of payment, or the whole of the Purchase-Money, *if required*; in default of which, the Lot or Lots so purchased to be immediately put up again and re-sold.
- V. The Lots to be taken away and paid for, whether genuine and authentic or not, with all faults and errors of description, at the Buyer's expense and risk, within Two days from the Sale; Messrs. CHRISTIE, MANSON and WOODS not being responsible for the correct description, genuineness, or authenticity of, or any fault or defect in, any Lot; and making no warranty whatever.
- VI. To prevent inaccuracy in delivery, and inconvenience in the settlement of the Purchases, no Lot can on any account be removed during the time of Sale; and the remainder of the Purchase-Money must absolutely be paid on the delivery.
- VII. Upon failure of complying with the above Conditions, the Money deposited in part of payment shall be forfeited; all Lots un-cleared within the time aforesaid shall be re-sold by public or private Sale, and the deficiency (if any) attending such re-sale shall be made good by the defaulter at this Sale.



# CATALOGUE.

On SATURDAY, JANUARY 14, 1893,

AT ONE O'CLOCK PRECISELY.

*The following are  
the Property of the late EDMUND ROUND, Esq.  
Sold by Order of the Court.*

## ENGRAVINGS, ETC.

	1 LITHOGRAPHS AND PHOTOGRAPHS; &c.	14
	2 HEADS OF DOGS—a pair—circles	2
	3 YACHTING SUBJECTS; &c.	4
	4 NAPOLEON AT BASSANO, after Barker, by Lewis	
	5 J. S. FORBES, Esq., after H. Herkomer, R.A.— <i>remarque proof</i>	
11. —	6 A PORTRAIT OF PITT; &c.	8
13. —	7 SHRIMPERS, by Robertson; &c.	3

## DRAWINGS.

15. —	8 Feeding the Pigeons; and The Fountain—a pair	2	<i>Misel</i>
10. —	9 ON THE SEINE, at Paris		
10.6	10 A POTTER; and Washerwomen	2	<i>Misel</i>
12. —	11 A LANDSCAPE WITH ANIMALS; and The Bird-trap	2	

## F. P. ROUND.

£2. - - - 12 River Scenes; and two others 4

## F. HARRIS.

6. - 13 FLOWERS; and others 4

*Guineas*

## T. COLLIER.

10 1/2 14 A LANDSCAPE

*Wallis*

## H. L. B.

£1. 8. - 15 CAMELIAS; AND AZALIAS

*Roe<sup>2</sup>*

## J. MOGFORD.

5 1/2 16 A CORNISH COAST SCENE

*Richardson*

## H. CAFFIERI.

2 1/2 17 WALLFLOWERS

## G. J. KNOX.

£1. 3. - 18 THE ENTRANCE TO A TOWN

## D. COX.

1/2 19 A PEASANT BOY

*From the Stone Ellis Collection*

5- 20 FIVE STUDIES—in one frame

6 21 THREE STUDIES—ditto

*R. Smith*

J. GLOVER.

22 A RIVER SCENE, with Cows 30 x 40

*A. Smith*

W. J. KNEWSTUB.

23 LATE

*Abel*

J. G. PHILP.

24 A COAST SCENE

SIR JOHN GILBERT, R.A., 1863.

25 THE KING'S TRUMPETER 10 x 15"

*(Tooth 6:38)*

## PICTURES.

2. - 26 HORSES IN A LANDSCAPE ; and a head of a horse 2  
 1. - 27 A MOTHER AND CHILD ; and a small sea-piece 2

SHAYER.

5. - 28 A HUNTING SUBJECT

J. CALLOW.

- 29 Shipping, off a port

D. C., 1862.

- 30 A LANDSCAPE, with shepherd and sheep

E. GILL, 1870.

- 1/2 31 ON THE RIVER DOCHART, Killin

F. PONDEL.

*Guineas*  
 ~ 32 A MISER

SHUTZEMBERGER.

*1. 10.* - 33 ITALIAN COURTSHIP

*Rowley*

E. SAINTIN.

*4* 34 A CHILD

W. H. EICKELBERG.

*5/2* 35 A COAST SCENE, with figures

A. M. LINDSH.

*5/2* 36 A RIVER SCENE: Sunset

*Shepherd*

J. F. WYNGAERDT.

*6* 37 A DUTCH FARM

*Robinson*

P. L. UJARRIDE.

*3* 38 A NYMPH SLEEPING, in a landscape

G. SCHREIBER.

*2* 39 AN ITALIAN PEASANT WOMAN

*Roe*

SEIGNAC.

*3* 40 THREADING THE NEEDLE

*do*

## C. MAGNUS.

2. — 41 A FOREST SCENE

## SCHRITEL.

2 1/2 42 A LAKE SCENE, with castle

## P. COLIN.

2 1/2 43 A FARM SCENE

## VICTOR DUPRÉ.

4 44 A RIVER SCÈNE, with cows

## LENGO.

1 1/2 45 "MADAME EST BIEN MALADE"

## BREYDAEL.

9 46 A PAIR OF BATTLE PIECES 2

8 47 A PAIR OF DITTO 2

## J. DE WET.

48 THE ADORATION OF THE SHEPHERDS—*signed*

*Smith (Duke St.)*

## GREUZE.

7 49 HEAD OF A GIRL—*oval*

---



A DIFFERENT PROPERTY.

PICTURES:

1. 5: - 50 EUROPA, from a Pompeian fresco

S. MICHELL.

2. 5: { 51 VIEW OF A SEA PORT

J. B. YEATS

52 CHILDREN WITH A CONCERTINA

*min!*  
F. R. PICKERSGILL, R.A.

*y* 53 THE LOVE LETTER: Venice

W. FOWLER.

*2 1/2* 54 A VIEW IN NORMANDY

*Mitchell*

MODERN.

*1 0 1/2* 55 PEACE; and HOPE—a pair—oval

2

D. O. HILL, R.S.A.

*3 1/2* 56 STIBLING CASTLE

*Hill*  
From the Armstrong Collection, 1876

## GUIDO BACH.

16 1/2 57 LA NOVENA, Rome

## J. LINNELL, SEN.

26 58 A LANDSCAPE, with figures and sheep—a sketch

*Lesser Jr.*

## G. SMITH (OF CHICHESTER).

3 59 A WOODY RIVER SCENE, with cottage and figure

## GUIDO BACH.

y 60 A BARGAIN: Egypt

*Wallis*

## C. STUART.

10. - 61 FRUIT

## E. COLEMAN.

31 62 TERRIER, FOX, AND DEAD PHEASANT

*Philpot*

## H. WALLACE.

6 1/2 63 SCOTCH FIRS: Donington Park

*Lesser Jr.*

## T. S. COOPER, R.A., 1844.

8 64 SUNSET, with cows

*Gooden*

## T. S. COOPER, R.A., 1846.

0 65 MOUNTAIN SHEEP: morning mist clearing off

*Wiggell*

A. NASMYTH.

40 66 VIEW OF BERWICK-ON-TWEED

*Signed*

GIORGIONE (AFTER).

5- 67 A CAVALIER

GUIDO BACH.

5- 68 HESITATION

*The following are Sold by Order of  
the Executors of the late W. W. BOULTON, Esq.,  
of Stourbridge.*

## DRAWINGS.

H. T. MUNN, 1876.

29 69 A ROCKY RIVER SCENE

## PICTURES.

T. S. COOPER, R.A., 1838.

65- 70 A VIEW IN DERBYSHIRE, with peasants and animals at a ford

*Vokins*

G. BAUGNIET, 1869.

48 71 THE LETTER OF RECOMMENDATION

H. GARLAND, 1877.

48 72 HIGHLAND DROVE, resting

*Wallis*

J. GOUPIL, 1869.

73 FRIENDS

## ANOTHER PROPERTY,

## LANCBET.

*2 1/2* 74 A GARDEN SCENE, with figures

*Parsons*

## OCCHIALI.

*15: -* 75 A VIEW OF NAPLES

## GUARDI.

*43* 76 THE PIAZZETTA OF ST. MARK, Venice

*A. Smith*

## G. DOW (AFTER).

*6* 77 THE VIOLIN PLAYER

*Russell*

## PALMEZZANO DA FORLI.

*10* 78 THE MADONNA AND CHILD

*A. Smith*

## A. DURER.

*10* 79 ECCE HOMO

## VAN DER NEER.

*1 1/2* 80 A LANDSCAPE, with figures cutting reeds—*oval*

*Jeffrey.*

## J. A. GUICHARD.

*1* 81 A COAST SCENE, with shipwreck

## C. MARATTI.

82 St. TERESA, with the infant Saviour and angels

## P. BRILL.

83 A RIVER SCENE, with sportsmen

## S. RUYSDAEL.

10. - 84 RUINS, FIGURES, AND ANIMALS

*Signed & Dated*

*Robertson*

## R. WILSON, R.A.

15. - 85 A LANDSCAPE

*Smith, Duke*

## A. VAN DER NEER.

18 86 A TOWN ON A RIVER, with boats and cattle in the foreground  
Moonlight

*Signed*

## SIR T. LAWRENCE, R.A.

40 87 EARL GREY

*Engraved by Latham*

*Wallis*

## C. DE HEUSCH.

20 88 A LANDSCAPE, with Phillip baptizing the eunuch in the fore-  
ground

*Signed*

50 in. by 62 in.

*Smith, Duke*



## CANALETTO (AFTER).

16 1/2  
89 A VIEW OF VENICE

## VAN DER NEER.

3  
90 A RIVER SCENE, with building and animals

*Smith, Duke D.*  
From the Collection of the Rev. Richard Cobbold

## WISSING.

4 1/2  
91 PORTRAIT OF QUEEN ANNE

## F. BOL.

29  
92 A GENTLEMAN, in black dress and white collar

Signed

*Donaldson*

*Signed, Gierensolt*  
~~VAN DER HELST.~~

48  
93 A GENTLEMAN, in black dress and hat, and with lace collar

## MILANESE SCHOOL.

7  
94 BOYS BATHING—a pair

<sup>2</sup>  
*A. Smith*

## J. F. SOLEMACKER.

10  
95 MILKING TIME

*Cohen*

## T. GAINSBOROUGH.

62  
96 THE MOWER WHETTING HIS SCYTHE

*Wallis*  
Mentioned by Governor Thicknesse, in his *Life of the Painter*,  
page 39.

N. MAES.

39 97 A YOUNG PRINCE WITH A KID.

*Signed and dated*

G. MORLAND.

135- 98 THE HALT AT THE CHEQUERS INN.

J. WYNANTS.

32 99 A LANDSCAPE, with peasants and animals near a ruined building

*Signed*

J. M. W. TURNER, R.A.

40 { 100 A STORM AT SEA

J. M. W. TURNER, R.A.

101 THE COMPANION } *Mamille*

A. STORCK.

10 1/2 102 A HARBOUR SCENE, with shipping and figures

*M<sup>c</sup>Farlane*

BAPTIESTE.

10 1/2 103 A VASE OF FLOWERS AND FRUITS, on a marble slab

*do*

VAN KESSEL.

17 104 A FOREST SCENE, with sportsmen

## GREUZE.

- 2 7/2 105 A FAMILY GROUP *A. Smith.*  
 11 106 St. JOHN A. DEL SARTO. *Radcliffe*  
 10. - 107 PORTRAIT OF H. COMPTON, 6th son of Spencer, Earl of North-  
 ampton, died Bishop of London, 1713 *Parsons*  
 21 108 THE DUCHESS OF NEWPORT

## MRS. CARPENTER.

- 13/- 109 PORTRAIT OF A. HOWARD, Esq.

## SIR. J. REYNOLDS (AFTER).

- 9/2 110 THE AGE OF INNOCENCE *by Paul.*

## SIR A. MORE.

- 0/2 111 A GENTLEMAN IN ARMOUR  
*(The Earl of Lindsay)* *Leggatt*

## S. ROSA.

- 4 1/2 112 HEAD OF A BANDIT *Vokins.*

## REMBRANDT.

- 2.9 113 PORTRAITS OF A DUTCH GENTLEMAN AND LADY—a pair *A. Smith*  
 2

## LEFEVRE.

8. - 114 A GENTLEMAN IN BROWN DRESS AND LACE COLLAR  
 15. - 115 A GENTLEMAN IN WIG AND LACE SCARF *Mamille*
-

The Property of A GENTLEMAN, deceased.

## DRAWINGS.

J. M. W. TURNER, R.A.

66 116 KILLIECRANKIE: Vignette Title, engraved in Scott's *Volhins*  
Prose  
Works, vol. xxv.

*From the Novar Collection, June 1877 200 guineas  
mentioned by Ruskin in "Life of Turner" as one of  
his finest works. (See words)*

G. FORTUNATI.

7 117 THE STANDARD BEARER

## PICTURES.

G. AIKMANN.

9 118 AN OLD BALLAD

H. ANDREWS.

2 119 SANCHO AND THE DUCHESS *Roe*

E. C. BARNES.

3 120 A LADY WITH A DOG—oval *Hill*

G. DE BREANSKI.

11 121 APPROACHING STORM: Suffolk coast

J. CARAUD.

25 1/2 122 COUNT ALMAVIA AND THE COUNTESS, from *Figaro*

J. CAROLUS.

123 SCANDAL

MRS. CARPENTER.

124 PORTRAIT OF A GENTLEMAN

*Parsons*

CLAUDE.

125 A LANDSCAPE WITH JUNO AND ARGUS

F. CROOKE.

126 THE CHASE

W. ETTY, R.A.

127 JOAN OF ARC, on finding the sword she had dreamt of in the Church of St. Catherine de Fierbois, devotes herself and it to the service of God and her country

*Volkens?*

*Exhibited at the Royal Academy, 1847*

UNKNOWN.

128 HOLY FAMILY

*Smith, Duke St.*

FRAGONARD.

129 CHAGRIN D'AMOUR

A. HARTLAND.

130 CRICCEITH CASTLE

J. HAYLLAR.

131 HONEY-SUCKLE



C. JONES.

132 PORTRAIT OF A HORSE

*Coyens*

C. S. LIDDERDALE.

133 MAIDEN MEDITATION

*do*

P. R. MORRIS, A.R.A.

134 BREEZY ENGLAND

R. PLUMBE

135 A VIEW OF A TOWN

POOLE.

136 VANITY

C. TOWNE, 1840.

137 AN OLD FAVOURITE

VAN DER NEER.

138 A VIEW IN HOLLAND

*Cohen*

A. WEISZ.

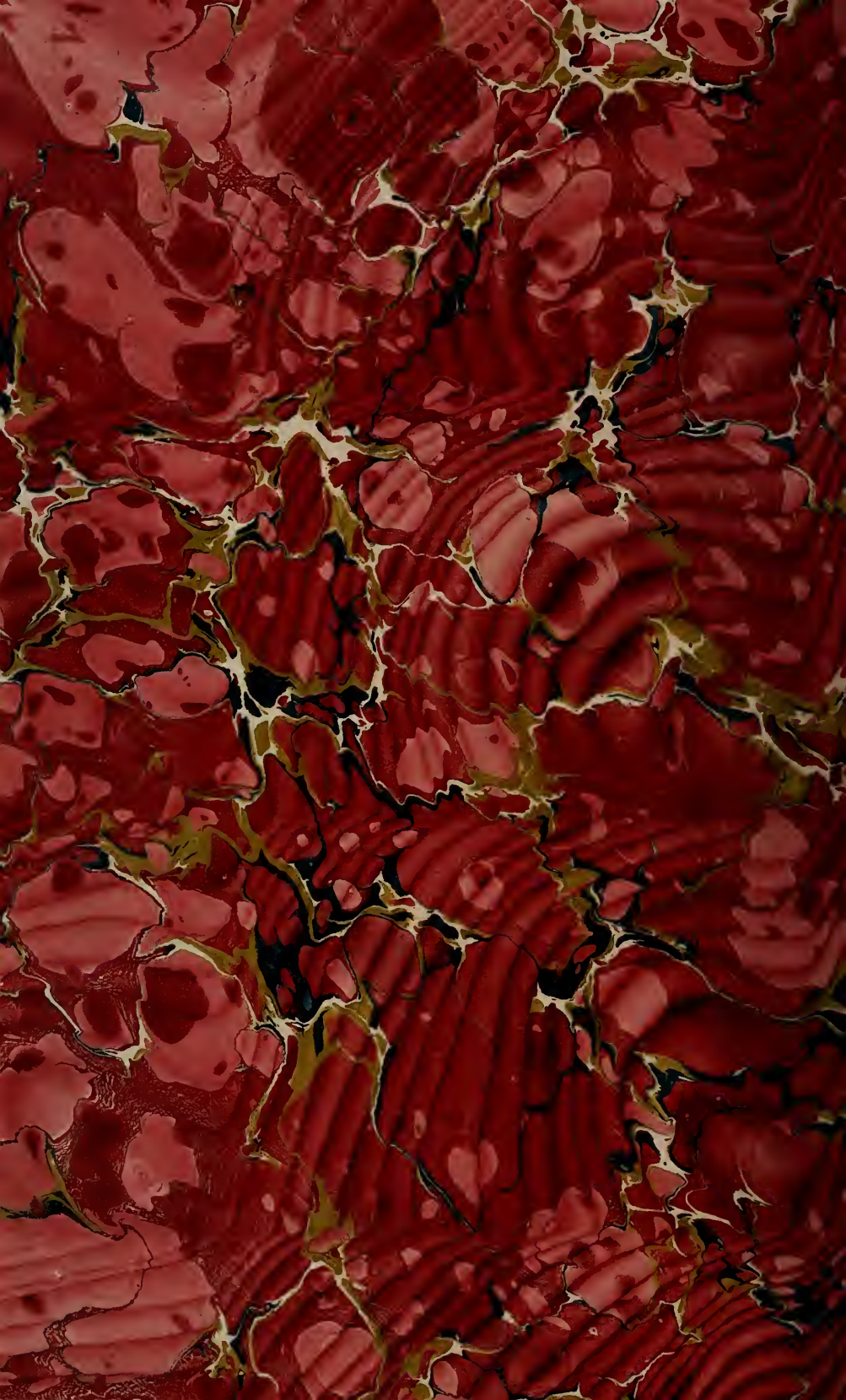
139 FOSTER BROTHERS AND SISTERS

N. WRIGHT.

140 IN DREAMLAND

FINIS.







**LIBRARY**  
GETTY CENTER

GETTY RESEARCH INSTITUTE



3 3125 00987 1050

